

## canon powershot s30 manual pdf

---



**File Name:** canon powershot s30 manual pdf.pdf

**Size:** 4109 KB

**Type:** PDF, ePub, eBook

**Category:** Book

**Uploaded:** 1 May 2019, 15:16 PM

**Rating:** 4.6/5 from 579 votes.

**Status:** AVAILABLE

Last checked: 9 Minutes ago!

**In order to read or download canon powershot s30 manual pdf ebook, you need to create a FREE account.**

[\*\*Download Now!\*\*](#)

eBook includes PDF, ePub and Kindle version

[Register a free 1 month Trial Account.](#)

[Download as many books as you like \(Personal use\)](#)

[Cancel the membership at any time if not satisfied.](#)

[Join Over 80000 Happy Readers](#)

### Book Descriptions:

We have made it easy for you to find a PDF Ebooks without any digging. And by having access to our ebooks online or by storing it on your computer, you have convenient answers with canon powershot s30 manual pdf . To get started finding canon powershot s30 manual pdf , you are right to find our website which has a comprehensive collection of manuals listed.

Our library is the biggest of these that have literally hundreds of thousands of different products represented.



## Book Descriptions:

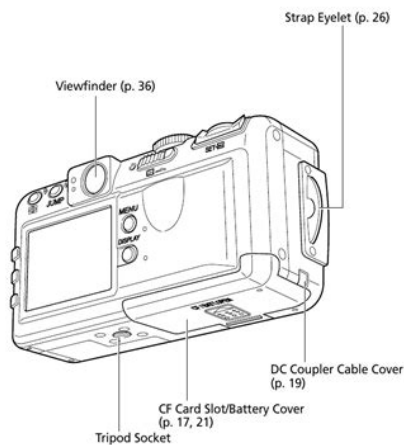
# canon powershot s30 manual pdf



This mark denotes additional topics that complement the basic operating procedures. In dusty, humid or greasy environments, the dust that collects around the plug over long periods of time may become saturated with humidity and shortcircuit, leading to fire. Do not place metal objects on top of the terminals. Two beeps will sound when the autofocus is set. Strap Eyelet p. 26 DC Coupler Cable Cover p. Components Guide Moving the cursor on the LCD monitor up and down. Use C or D to select a menu item on the LCD monitor. Polish the terminals with a tissue or a dry cloth before charging or using the battery pack. Connect to Power Supply Compact Power Adapter. Preparing the Camera. Turn on the camera p. Using the Soft Case Optional Preparing the Camera Thread the small loop of the wrist strap through the strap holder on the camera and pull the large loop through the small loop until the strap is firmly secured. The greater the bias toward the left in the graph, the darker the image. The greater the bias toward to the right, the brighter the image. If the image is dark, adjust the exposure compensation to a positive number. The Parallax Phenomenon Please note that the actual image may differ from the image seen in the optical viewfinder due to the physical separation between the viewfinder and lens. This is called the parallax phenomenon and is more noticeable the closer the subject is to the lens. Each menu item has three choices. e.g. Startup image Default camera theme Science fiction theme Animal bird or dog theme Changing My Camera Settings Turn on the camera p. Check that the camera is in Shooting mode p. 27. Aim the camera at the subject. Use the zoom lever to achieve the desired composition relative subject size in the viewfinder. There are two ways to display the image for longer. 2 Keeping the Shutter Button Pressed The image continues to appear on the LCD monitor as long as you keep the shutter button fully depressed. <http://gibidesign.com/fckfiles/dukane-24a715-manual.xml>

- **canon powershot s30 manual pdf, canon powershot sx30 is manual pdf, canon powershot s30 manual pdf, canon powershot s30 manual pdf download, canon powershot s30 manual pdf free, canon powershot s30 manual pdf manual, canon powershot s30 manual pdf software, canon powershot s30 digital user manual pdf.**

## Back / Bottom View



- The LCD monitor is covered with a thin plastic film for protection against scratches during shipment. Remove it before using the camera.

Components Guide 11

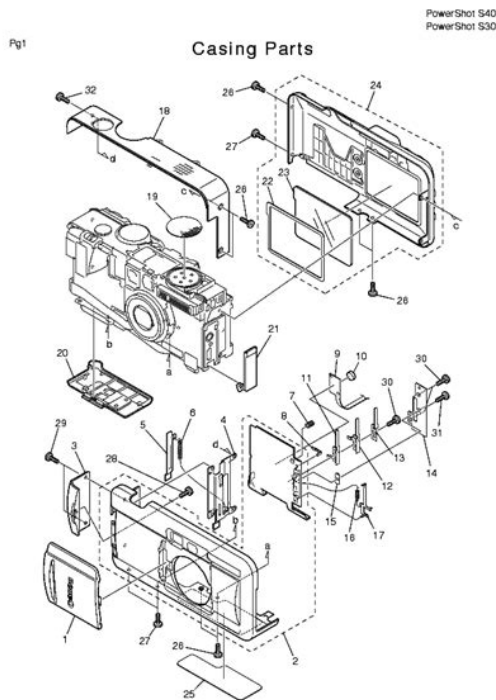
The flash fires automatically as required by the lighting level, and the Redeye reduction, Auto redeye reduction lamp fires each time the main flash fires. Auto The flash fires automatically as required by the lighting level. Redeye reduction, Flash on The redeye reduction lamp and the flash always fire. Vivid Neutral Sepia Select a color effect using B or A on the multicontroller. Framing a Subject PhotoStitch detects the overlapping portions of adjoining images and merges them. The actual figures will vary according to the shooting objects and conditions. Press the button to turn the LCD monitor on. PowerShot S30 3.8 times, 4.8 times, 6.0 times, 7.4 times, and 10 times PowerShot S40 4.3 times, 5.3 times, 6.7 times, 8.2 times, and 11 times. The resolution PowerShot S30 2048 x 1536, PowerShot S40 2272 x 1704 and compression settings cannot be adjusted for these images. Turn the shooting mode dial to. Faster shutter speeds allow you to catch an instantaneous image of a moving subject while slower speeds create a flowing effect and allow you to shoot without a flash in dark areas. Selecting a lower aperture value opening the aperture allows you to fade the background and create a beautiful portrait. A higher aperture value closing it brings the entire range from foreground to background into focus. If the camera shake warning appears in the center of the LCD monitor, secure the camera to a tripod before shooting. This is convenient for shooting fireworks and other images where it is difficult to set the correct exposure automatically. Select a shutter speed using B or A on the multicontroller. You can set the AF frame in the following way. Select the AF frame using B or A on the multicontroller. Select a setting using B or A on the multicontroller. Set the white balance mode to a natural or artificial light setting according to the circumstances. Settings are automatically set by the camera Auto Daylight For recording outdoors on a bright day. <http://www.fobas.cz/userfiles/dui-training-manual.xml>



The correct white balance may not be obtained when the exposure is incorrect image is completely black or white. AEB settings can be combined with exposure compensation settings p. Expand or contract the range using B or A on the multicontroller. This is effective when the contrast is too strong between the subject and background or when a subject is backlit. For an explanation of how different combinations of light metering options and a selected AF frame affect where the AE lock is metered, see page 80. For an explanation of how different combinations of light metering options and a selected AF frame affect where the FE lock is metered, see page 80. This can be switched to spot light metering. Evaluative Light Metering CenterWeighted Averaging Center Spot AE Point AF Point Press the Press the button to select the metering mode. Press the shutter button halfway to lock the focus. Shooting Selecting Particular Effects shooting modes. The file numbers are reset to the start 1000001 each time a new CF card is inserted. New images recorded on CF cards with existing files are assigned the next available number. The file number of the last image to be shot is memorized so that images recorded to a new CF card start from the next number. RedEye Reduction, Auto Auto Flash RedEye Reducti o n, Fl a sh On Macro Mode Single Shot Normal Continuous Mode Drive Mode Hi g h Speed Conti n uous Mode SelfTimer 10 sec. SelfTimer 2 sec. Auto. Setting selection is possible. Setting can only be selected for the first image. Setting selection is not possible. Shaded Area Setting remains in effect even when the camera is turned off. Holding B or A moves more rapidly between images, but the images will not appear as clearly. Slide the zoom lever toward. Change the image selection using B, A, C or D on the multicontroller. The displayed images change. The sound data is saved in WAVE format. Press the button while replaying images.

All Images Plays all the images on the CF card in order Slide Show 1 3 Plays the images selected for each show in order p. Images display in the order of their selection. Adjusting the Play Time and Repeat Settings You can change the play time for all the images in a show and have the show repeat itself continuously. Sets the duration that each image in a slide show is displayed. The options are any one Play Time of 310 seconds, 15 seconds, 30 seconds and Manual. See the Software Starter Guide. Replaying button. Exercise caution before erasing a file. Exercise caution before erasing a file. You can also select the print type and whether or not to print the date and file number. These settings are compatible with the Digital Print Order Format DPOF standards so that images can be printed on DPOFcompliant digital printers or at participating photo labs. You can set the number of copies up to 99 to be printed using C or D on the multicontroller. Standard Print Type Index Both Date File No. It can also be used with the DPOF print settings. Connecting Card Photo Printer CP10 to the Camera Two direct interface cables are supplied with the printer. Setting the Print Style You can select from among the following print styles. Set the selection using B or A on the

multicontroller. Printing with Bubble Jet Printer Optional Setting the Print Style You can select from among the following print styles. Set the selection using B or A on the multicontroller. Rotates images 90 or 270 degrees clockwise in the display. Erases all images from a CF card excluding protected images. Press the button for longer than 5 seconds. If dirt remains, contact the nearest Canon Customer Support Help Desk see the back of this guide. Reset settings to default. Resetting Busy. No CF card Cannot record! CF card error! CF card full Naming error! Change the battery pack No image Image too large Incompatible JPEG format You attempted to replay an incompatible JPEG file.

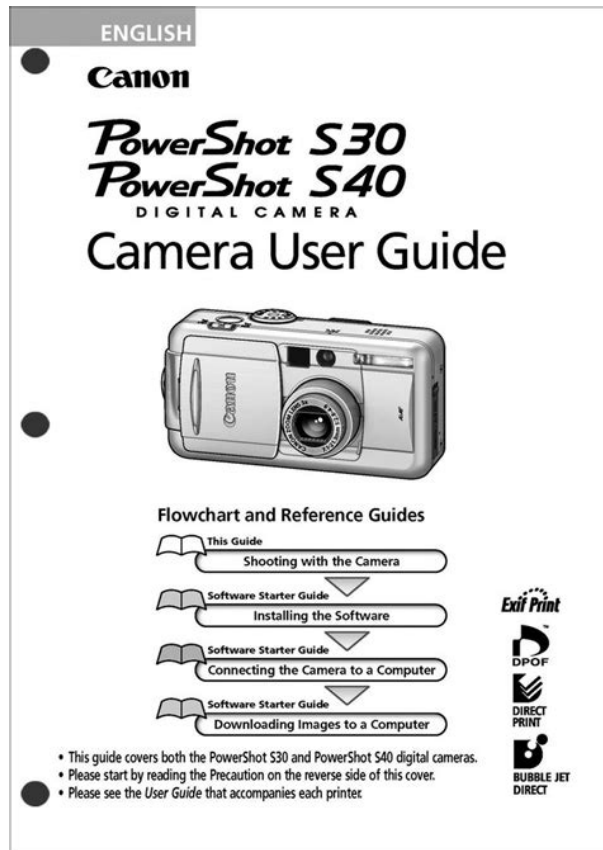


<https://www.thebiketube.com/acros-bosch-rd532-manual>

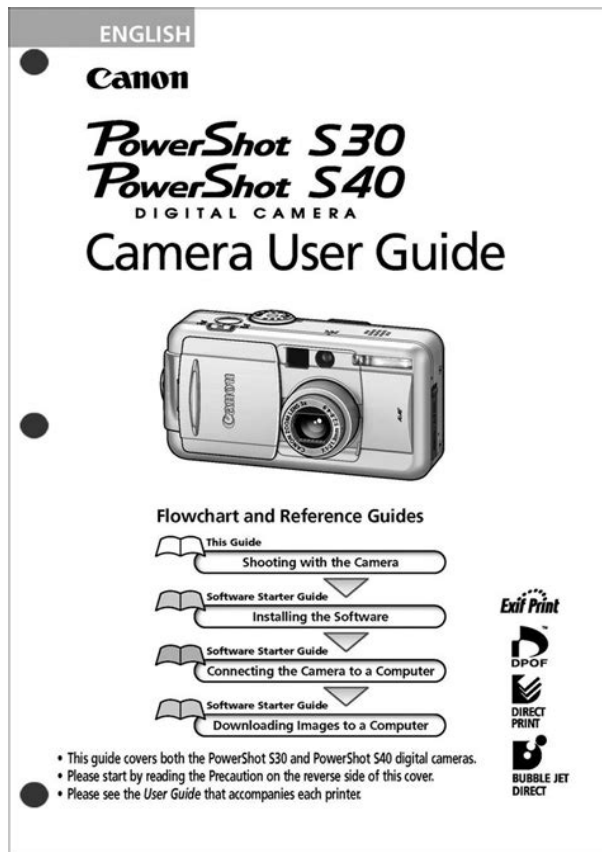
No Paper No Ink Ink Cassette Error Paper Jam Communication Error Cannot trim Readjust trimming Cannot Print! Could not print xx images You attempted to use the DPOF print settings to print Paper cassette is incorrectly inserted or out of paper. Please request replacement of the waste tank to the shop where you purchased the printer or your nearest Canon customer support center listed in the Bubble Jet Quick Start Guide. Subject to change without notice. The cables with the ferrite core provided with the digital camera must be used with this equipment in order to comply with Class B limits in subpart B of Part 15 on FCC rules. In dusty, humid or greasy environments, the dust that collects around the plug over long periods of time may become saturated with humidity and shortcircuit, leading to fire. Do not place metal objects on top of the terminals. There is a risk of fire and other hazards. Charging indicator Install the Battery p. Two beeps will sound when the autofocus is set. Shoot p. 34. t p. 34 t p. 34 Press the shutter button all the way. You will hear Press Press ss the shutte. Moving the cursor on the LCD monitor up and LCD m down. Use C or D to select a menu item on the LCD select a select a selec. Polish the terminals with a tissue or a dry cloth before charging or using the battery pack. The actual figures will vary according to the shooting he actual figure he actual figure ual fig will vary acco will vary acco conditions and settings. Attach the power cord to the compact ord to th ord to th. Actual totals may vary according to the ect sta ect sta ting conditions est ing conditions est g conditions e. Turn on the camera p. The greater the bias toward

the left in the graph, the darker the image. The greater the bias toward to the right, the brighter the image. If the image is dark, adjust the exposure compensation to a positive number. Watch the LCD monitor while performing the following procedures. Each menu item has three choices. e.g.

<http://futurepointtech.com/images/c-2020-manual.pdf>



Startup image Default camera theme era theme era theme Science fiction theme iction theme ction theme Animal bird or dog theme. File format of My Camera Settings Startup Image Recording image format JPEG Base line JPEG Base line Base line e JPEG Check that the camera is in Shooting mode p. 27. e p. 27 e p. There are two ways to display the image for longer. 2Keeping the Shutter Button Pressed The image continues to appear on the LCD monitor as long as you keep the LCD mon D mon nitor as lon. The flash fires automatically as required by the lighting level, and the Redeye reduction, Auto redevye reduction lamp fires each time the main flash fires Auto The flash fires automatically as required by the lighting level. The people are illuminated with light from the flash while the backdrop is captured at a slow shutter speed so that both appear correctly exposed. Turn the shooting mode dial to mode e dial to. Vivid Emphasizes the contrast and color saturation to record in bold color. Neutral Tones down the contrast and color saturation to record neutral hues. Records in black and white. Framing a Subject PhotoStitch detects the overlapping portions of adjoining images and merges them. The actual figures will vary according to the ts standard s standar anon testing cond anon testing cond non testing co itions. Press the button to turn the LCD monitor on. PowerShot S30 3.8 times, 4.8 times, 6.0 times, 7.4 times, and 10 times PowerShot S40 4.3 times, 5.3 times, 6.7 times, 8.2 times, and 11 times. Initial Shooting Next Shooting Mode Resolution and Compression after Change Mode Settings change to those of the next mode Settings do not change. Turn the shooting mode dial to. al to. al to Shoot the image. Faster shutter speeds allow you to catch an instantaneous image of a moving subject while slower speeds create a flowing effect and allow you to shoot without a flash in witho witho.



Selecting a lower aperture value opening the aperture allows you to fade the background and create a beautiful portrait. A higher aperture value closing it brings the entire bring bring range from foreground to background into focus. If the camera shake warning appears in the center of the LCD monitor, secure the camera to a tripod before shooting. This is convenient for shooting fireworks and other images where it is difficult to set the correct exposure automatically. Turn the shooting mode dial to mode e dial to. You can set the AF frame in the following way. The camera automatically selects the AF frame to focus according to Auto Selection AiAF the shooting conditions. Set the white balance mode to a natural or artificial light setting according to the circumstances. Settings are automatically set by the camera Auto Daylight For recording outdoors on a bright day. Press the button twice. The correct white balance may not be obtained when not b not b the exposure is incorrect image is completely black or white. AEB settings can be combined with exposure compensation settings p. This is effective when the contrast is too strong between the subject and background or when a subject is backlit. For an explanation of how different combinations of light metering options and a selected AF frame affect where the AE lock is metered, see page 80. For an explanation of how different combinations of light metering options and a selected AF frame affect where the FE lock is metered, see page 80. This can be switched to spot light metering. Appropriate for standard shooting conditions, including backlit scenes. The camera divides images into several zones for light metering. The camera for light mete or light met Evaluative. Press the shutter button halfway to lock the focus.Press the button to turn on the LCD monitor.The file numbers are reset to the start 1000001 each time a new CF card is inserted.

New images recorded on CF cards with existing files are assigned the next available number. The file number of the last image to be shot is memorized so that images recorded to a new es rec es rec. Slide the zoom lever toward. Display an image shot in mode using mode mode using us using B or A on the multicontroller.The sound data is saved in WAVE format. Press the button while replaying

images. All Images Plays all the images on the CF card in order Slide Show 1 3 Plays the images selected for each show in order p. Images display in the order of their selection. Adjusting the Play Time and Repeat Settings You can change the play time for all the images in a show and have the show and have t nd have t repeat itself continuously. See on a comp on a comp uter with t. Exercise caution before erasing a file. Set the camera to the replay mode p. 29. p. 29 p. 29 Select the image you wish to erase using B or A on the se using B or A o or A o. Exercise caution before erasing a file. You can also select the print type and whether or not to print the date and file number. These settings are compatible with the Digital Print Order Format DPOF standards so that images can be printed on DPOF-compliant digital printers or at participating photo labs. You can set the number of copies pies pies up to 99 to be printed using C or D on the. Prints one image per page Standard Prints the selected images together at a reduced size in an index format Print Type Index Prints the images in both the standard and index formats and index and index f Both. It can also be used with DPOF print settings. To find out which Direct Print compatible printer can be used with this camera, please refer to the System Map. Choose an image using B or A on the multicontroller and press Set the number of prints, the print style and cropping settings he print he print t style an n d cropp t style an. Specify the desired number of copies using B or A on the B or A o B or sired n sired n umber mber.

<https://www.mozartcantat.nl/wp-content/plugins/formcraft/file-upload/server/content/files/162729af806652---breville-compact-breadmaker-manual.pdf>

Set the selection using B or A on the multicontroller. Choose an image using B or A on the multicontroller and press Set the number of prints, the print style and cropping settings e print s e print s style and d croppin style and. Specify the desired number of copies using B or A on the the desir the desire d number r of cop d number numb er of cop. Set the selection using B or A on the multicontroller. Prior to Trimming Please set the Print Style Paper, Borders and Date first before setting the trimming te first te first te f st before settin t before setti. For details, please refer to the Software Starter Guide. Reference Item Menu Screen. If dirt remains, contact the nearest Canon or lens. or lens. or le s. If dirt rem s. If dirt rem ains, ains, Customer Support Help Desk. Contact the nearest Canon be da e dam act t act th Customer Support Help Desk. Reset settings to default. Do you wish to reset all the camera and menu settings to default. Resetting Resetting all the camera and menu settings to default menu setti menu settin Busy. Cannot rotate You attempted to rotate an image that was image tha image tha photographed with another camera, recorded in a another. Depending on the printer model, some messages may not display. No Paper Paper cassette is incorrectly inserted or out of paper. Or the paper feed isn't operating correctly. No Ink The ink cartridge has not been inserted or has run out rted. Please request replacement of the waste tank to the shop where you purchased the printer or your nearest Canon customer support center listed in the Bubble Jet Quick Start Guide. Subject to change without notice. You may use non Canon Brand Accessories with this Digital Camera. However, Canon Makes no warranties concerning, and is not responsible for damages. This page requires Javascript. Modify your browsers settings to allow Javascript to execute. See your browsers documentation for specific instructions.

To install your download click on the name of the downloaded file. Access your account, or create a new account, click here to get started. Actual totals and file sizes may vary according to the subject, shooting conditions and shooting mode. Direct connection to Canon Card Photo Printer CP10 no computer required. Recommended Software File Name Date File Size Optional Software File Name Date File Size Recommended Manuals File Name Date File Size Optional Manuals File Name Date File Size The Product purchased with this limited warranty is the only PowerShot Digital Camera to which this limited warranty applies. Warranty exchange or replacement does not extend the original warranty period of the Product. The sole warranty, if any, with the respect to such nonCanon brand items is given by the manufacturer or producer thereof. This limited warranty covers all defects



encountered in normal use of the Products, and does not apply in the following cases A Canon Customer Care representative will attempt to diagnose the nature of the problem and correct it over the telephone. If the problem cannot be corrected over the telephone, you will be asked to follow the applicable procedures for MAILIN SERVICE. Note that a dated proof of purchase is required at the time of service. MAILIN SERVICE is a program under which your Product is repaired by a Canon U.S.A. or a Canon Canada authorized service center for the Product. You will be given the name, address and phone number of an authorized service center. It is your responsibility to properly package and send the defective Product, together with a copy of your dated proof of purchase, a complete explanation of the problem and a return address to the authorized service center at your expense. Do not include any other items with the defective Product. The Product covered by this limited warranty and proven to be defective upon inspection will be repaired and returned to you without charge by the authorized service center.

Any Product received by the authorized service center that is not covered by the limited warranty will be returned unrepaired, or at the discretion of the authorized service center, you may receive a written estimate of repair at such cost as the service center may establish from time to time. Scroll down to easily select items to add to your shopping cart for a faster, easier checkout. Visit the Canon Online Store It plugs directly into a power outlet without a cable. Effectively doubles the flash range of the camera. Comes with mounting bracket. The cable connects to your camera and to the USB port on your PC or MAC Computer. Comes standard with the EOS 1Ds Mark III, 1D Mark IV, 1D Mark III, 1Ds Mark II, 1D Mark II N, 1D Mark II, 5D Mark II, 7D, 5D, 50D, 40D, 30D, 20D, 10D, Digital Rebel XTi, Digital Rebel XT and Digital Rebel. Please see Compatibility tab for compatible models. Four pieces of weight, plastic pins and weight securing screws are included in the WWDC1 package. You may download and use the Content solely for your personal, noncommercial use and at your own risks. Canon shall not be held liable for any damages whatsoever in connection with the Content, including, without limitation, indirect, consequential, exemplary or incidental damages. You shall also not and shall not let others reproduce, modify, reformat or create derivative works from the Content, in whole or in part. Page 6 Read this First Test Shots Do not place metal objects Page 10 Front View Quick Start Page 12 Controls Components Guide Compensation Button p. 73, 74. Page 15 Charging the Battery Pack Shooting Mode Dial. Use the shooting mode dial to switch between the shooting modes. The multicontroller is used to select choices, images and menus on the LCD Recharge Battery Pack NB2L supplied with Battery Charger CB2LT or CB2LTE before you. Page 18 Charging the Battery Pack continued. Battery Pack Handling Precautions. Page 19 Using a Household Power Source Installing the Battery Pack.

Install Battery Pack NB2L supplied into the camera as follows. Use a household Page 22 Using a Household Power Source continued CF Cards and Estimated Capacities Recordable Images Do not bend, force, or subject You can quickly switch between Shooting mode and Replaying mode. This is The LCD monitor can be used to confirm an image during shooting, to. Page 33 Information Displayed on the LCD Monitor. The LCD monitor displays information in Shooting or Replaying mode, such as the Page 35 0. Page 36 Using the Optical Viewfinder to Shoot Pressing the Shutter Button. The shutter button features a two-stage action. Page 37 Adjusting the Zoom Focal Length 0. Page 38 Selecting Menus and Settings Using the Optical Viewfinder to Shoot. The camera is equipped with an optical viewfinder. Page 39 Adjusting the Zoom Focal Length. The focal length can be adjusted from 7.1 to 21.3 mm equivalent to 35. Page 40 Selecting Menus and Settings This chart shows the options for each menu and the default settings. My Camera allows you to customize the startup image and startup, shutter, Page 46 Checking an Image Right after Shooting Shooting Letting the Camera Select Settings In this mode, all you have to do is press the. Page 47 Using the Flash 0. Page 48 Checking an Image Right after Shooting. Checking the Image. After a photo is taken, the image displays on the. Page 49 Landscape Mode Using the Flash. Use the flash

according to the guidelines below. Page 50 Fast Shutter Using the Flash continued Use this mode when you want the subject to appear sharp and the background to blur. Use this mode to capture human subjects against the backdrop of an evening sky or Use this mode to shoot moving objects to make them appear blurred such as river You can shoot with different color effects. Page 55 Stitch Assist Mode.

Use this mode to shoot a series of overlapping frames for merging stitching into a Page 58 SelfTimer Movie Mode. Use this mode to shoot movie frames. The resolution can be set to 320 x 240 Use the macro mode to shoot closeups of subjects in the range of 10 to 80 cm. Page 60 Digital Zoom SelfTimer. You can take pictures with the selftimer in any shooting mode. Use this mode to shoot successive frames while the shutter button is fully pressed. With the combined optical and digital zoom functions, images can be PowerShot S30 3.8 times,. Page 63 Shooting Selecting Particular Effects. Camera settings such as image resolution and compression, shutter speed and Page 64 Changing the File Format Changing the Resolution and Compression continued The recording file format can be switched to the RAW format. With the standard JPEG. Page 67 Program AE. Use the program AE mode to have the camera automatically set the shutter speed Page 68 Setting the Aperture Setting the Shutter Speed. When you set the shutter speed in the shutter speed priority AE mode, the camera When you set the aperture in the aperture priority AE mode, the camera Page 71 Selecting an AF frame 0 0 0 0 0 0 0 0 0 0 0 0 0 0 0 0 0. Page 72 Manually Setting the Shutter Speed and Aperture. You can manually set the shutter speed and aperture to achieve a. Page 73 Adjusting the Exposure Compensation Selecting an AF Frame. The AF frame indicates the area of the composition on which the camera focuses. You. Page 74 Setting the White Balance Selecting an AF Frame continued Adjust the exposure compensation setting to avoid making the subject too dark When the white balance mode is set to match the light source, the camera can. Page 77 Auto Exposure Bracketing AEB Mode Setting a Custom White Balance. You can set a custom white balance to obtain the optimal setting for the. Page 78 Setting the White Balance continued In this mode, the camera automatically changes the exposure within a set range to.

Page 80 Adjusting the Flash Output You can adjust the flash output for flash photography. You can set the exposure and focus separately. This is effective when the. Page 82 Switching Between Light Metering Modes Locking the Exposure Setting AE Lock continued You can lock the flash exposure so that the exposure settings are. Page 84 Shooting Problem Subjects for the Autofocus Switching between Light Metering Modes. Centerweighted averaging is the default light metering mode. This can be Page 86 Shooting Problem Subjects for the Autofocus. The autofocus may not work well on the following types of subjects. Page 88 Shooting Problem Subjects for the Autofocus continued. Shooting in Manual Focus Mode. The focus can be manually set. The ISO speed, contrast, sharpness and saturation settings can be adjusted for shooting. You can select the way file numbers are assigned. Page 92 Viewing Images Singly Single Image Replay Functions Available in Each Shooting Mode. This chart shows the functions available in each shooting mode. You can view the recorded images on the LCD monitor. In single image replay, the displayed image can be shown magnified by an Up to nine images can be viewed at once in Index. Page 97 Rotating Images in the Display Jumping Between Images. The display can be advanced or set back 9 images in either single image replay or. Page 98 Attaching Sound Annotations to Images Viewing Movies. You can replay the images shot in mode. Images can be rotated 90. Original 90. Page 100 Attaching Sound Annotations to Images. In replay mode including single replay, index replay, magnifying replay and the replay Starting a Slide Show. All images, or a selection of images, can be displayed one by one. Page 102 Automated Playback Slide Show continued. Selecting Images for Slide Shows. You can mark images for inclusion in slide shows 13. Page 103 Protecting Images 5 Press the button. Adjusting the Play Time and Repeat Settings. You can.

Page 104 Erasing Images Singly Automated Playback Slide Show continued You can protect

important images from accidental erasure. You should format a new CF card or one from which you wish to erase all. Page 109 Setting the Print Style Print Settings DPOF Print Settings. Images on a CF card can be individually selected for printing in a specified number. Page 110 Selecting Images for Printing continued Page 111 Resetting the Print Settings Setting the Print Style. The following print settings can be selected. The print settings can all be removed at once. The print type is reset to. Page 114 Printing Printing with a Direct Print Compatible Printer Optional. A Direct Print compatible printer, sold separately, can be connected to the. Page 116 Printing. An image can be printed when displayed in single replay or selected in index replay. Page 118 Printing continued Page 119 Printing with DPOF Print Settings Trimming Printing a Portion of an Image. You can specify which portion for an image gets printed. You can use the DPOF print settings to print with a Direct Print compatible. Page 122 Printing with DPOF Print Settings continued Page 124 Connecting Bubble Jet Printer to the Camera continued Selecting the Number of Copies Trimming Printing a Portion of an Image. You can specify which portion of an image gets printed. Page 129 3 setting You can use the DPOF print settings to print using Bubble Jet Printer with. Page 131 0 0 0 0 0 0 0 0 0 0 0 0 0 0 0 0 0. Page 132 Resetting the Transfer Settings Image Transfer Settings DPOF Transfer Order. Using the camera, you can make marks on images you wish to transfer and. Page 133 Rec. Menu 3 Select images for transferring. Page 134 Resetting the Transfer Settings. The transfer marks can all be removed at once. Page 135 List of Menu Options. The chart below lists menu items and settings. See Selecting Menus and Settings Menu continued ISO Speed Sets the sensitivity at which images are.

<http://schlammatlas.de/en/node/17963>